

ninox PARTNER FOR MECHANICAL ENGINEERING COMPANIES

**ninox**

**Ninox. Partner for  
mechanical engineering  
companies**





# > Ninox. Simply more efficient processes.

**With Ninox, your team only needs ideas, not developers.**

# Ninox is a strong partner for mechanical engineering companies



6,000

companies trust  
in Ninox software

96%

of all customers are very  
satisfied with Ninox customer  
service according to a survey

## In good company

To remain competitive, successful companies need effective and powerful systems to support employees, customers, projects (e.g. CRM, finance, HR or ERP) in the context of digitalization.

However, many processes are often still mapped using Excel in combination with other tools. This leads to high manual effort and intransparency.

## The challenge

Existing software tools were mostly not flexible and integrated.

Data processing and exchange were complex, costly and error-prone. Structured collaboration in real time, in the mobile application and a high level of clarity could hardly be combined.

The development of new, custom-fit solutions is lengthy and expensive.



## Your solution

Ninox can be used in the cloud across devices via the browser or the app

Ninox replaces the use of multiple Excel spreadsheets and software tools

Ninox unifies and standardises individual workflows

Ninox requires no code / developer knowledge

## Your advantages

Time saving through less manual effort

Higher security through standardised, flexible and easy to design procedures

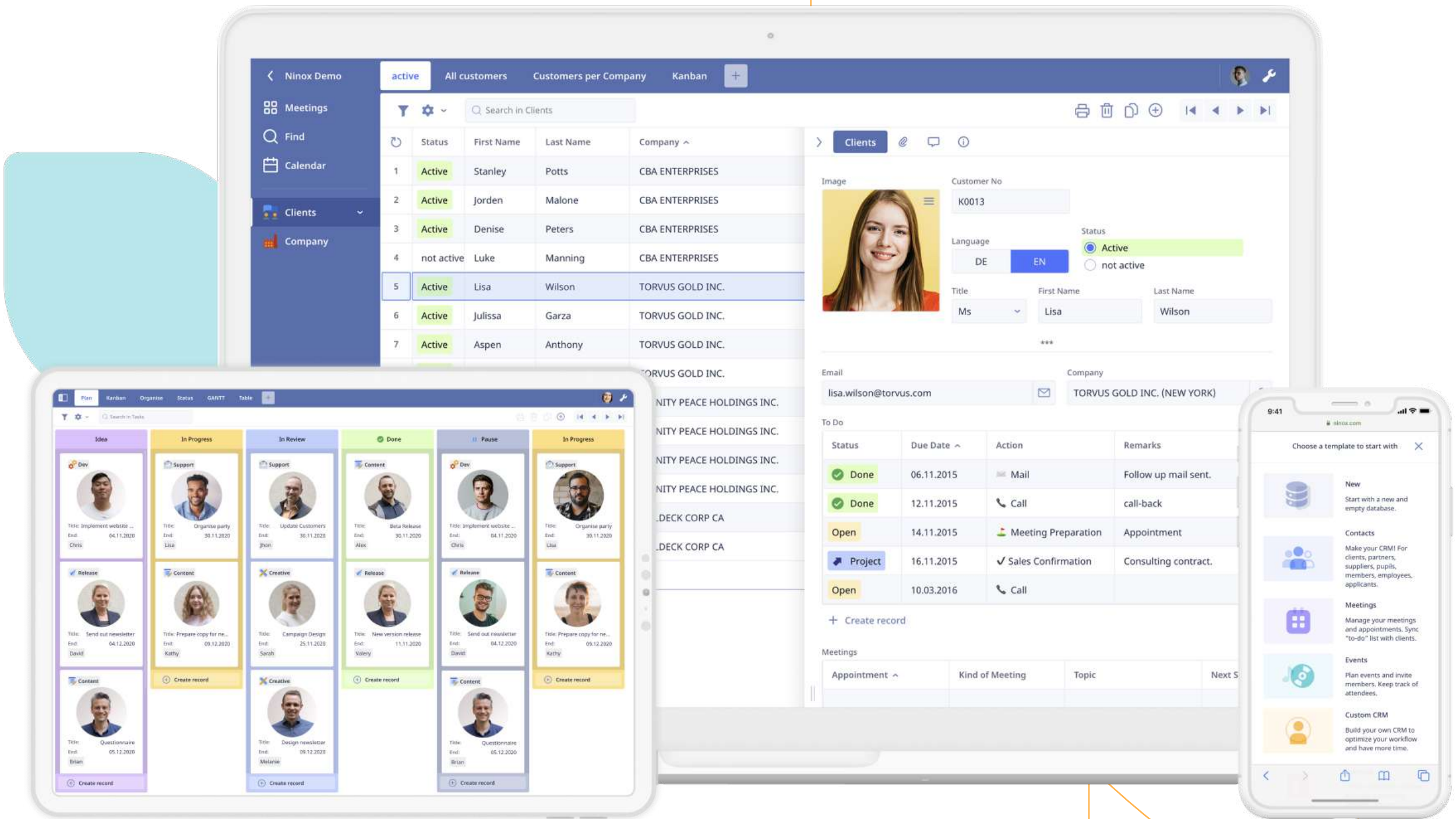
Complete transparency through tracking of activities and interactions

Highest flexibility through individual design options

# Intuitive Modular software applications

With Ninox you design your required database and software applications intuitively according to the modular principle.

The code is generated automatically in the background.





## **Flexible** Integration into the existing IT structure

With Ninox you can easily map individual requirements.

Seamless integration into the existing IT structure is easily possible.

Ninox is designed to be particularly powerful for creating enterprise-grade applications.



# Efficient

Develop workflows together as a team and implement them in a timely manner

BENEFITS

With Ninox, teams can develop software applications for their workflow together with the IT department and implement them in a timely manner.





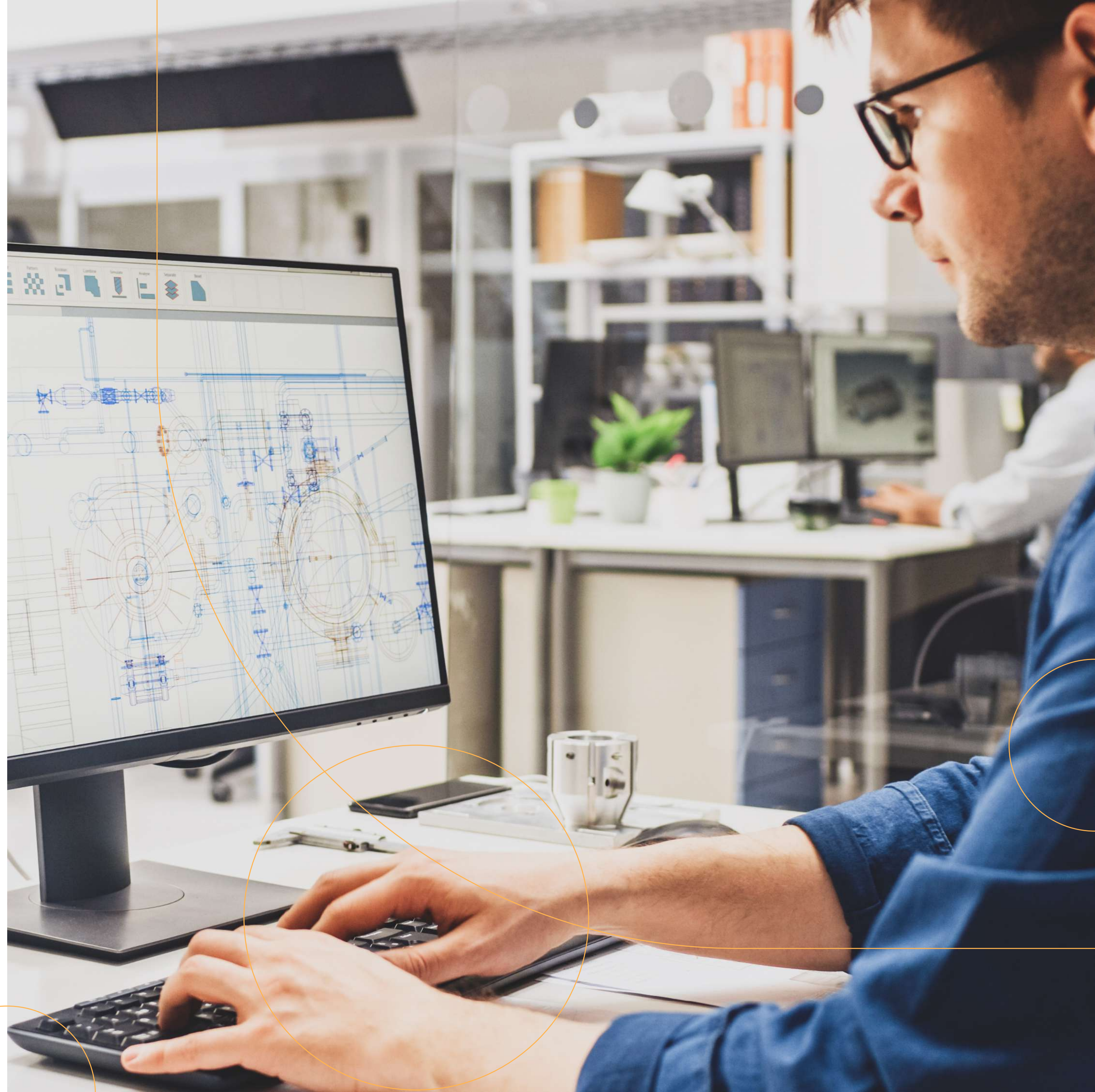
# Cost-saving

## Realise projects faster and cheaper

BENEFITS

Ninox enables you to realise your projects faster and cheaper, so that your teams can focus on what really matters:

Your business success.

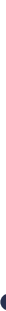




# Ninox customer success stories



**Project administration**



**Compliance management**



> *With Ninox, our employees can create their own solutions for their projects without any programming knowledge.*

**Thomas Albinger**, Managing Director, Companeer



8  
Years

20  
Employees

80%  
Time saving

## Challenge

Companeer GmbH is an engineering firm specialising in stadium consulting. With around 20 employees, it supports the operators of large sports facilities such as the Allianz Arena in the planning and implementation of efficiency-enhancing measures. Each project is different, which requires extremely flexible software.

## Solution

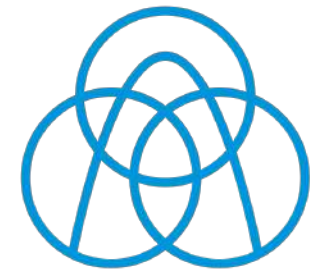
For a long time, new solutions were always created and adapted with Access and Filemaker, but this was very time-consuming and tied to the person of the managing director. With Ninox, the project managers at Companeer now develop their own individual solutions for their projects. And the higher-level project management is also done with Ninox.

**Features:** *Project management* *Documentation* *Teamwork*



> *With Ninox and eco Compliance,  
all officers can focus on the  
legislation that affects them.*

**Lays Dal Santo Francisco**, Environmental Manager, thyssenkrupp



thyssenkrupp

### Challenge

As a system partner to the automotive industry, thyssenkrupp System Engineering GmbH manufactures components for the body and powertrain process chains. The group employs around 4,600 people in 14 countries worldwide. Compliance management therefore has to take into account many different regulations.

4600

Employees

14

States

6

Federal states

### Solution

For the 6 German sites located in different federal states, thyssenkrupp uses a ninox-based solution from ECO Compliance. Instead of being informed about important changes by e-mail and newsletter, as was previously the case, all officers now access the same, always up-to-date database. The legal register is also maintained centrally.

Features: *Compliance management* *Employee management* *Product data management*



## Our customers use the ninox app for the following tasks

- Process Management
- Material Management
- Construction Planning
- Product Data Management
- Construction Management
- Channel Management
- Task Management
- Order Management
- Building Yard Management
- Contact Management
- Warehouse Management
- Equipment Management
- Employee Management
- Material Documentation
- Personnel Management
- Material Order
- Housing Management
- Article Management

# Support and training

REQUIREMENTS

## E-mail

The Ninox Customer Support Team provides you with first-class 1st, 2nd and 3rd level support at all times.

## Key account management

A dedicated key account manager will contact you at regular intervals to keep you up to date on product development.

## Open webinars and meetings

Learn how to get the most out of Ninox by watching weekly webinars and joining live conversations.

## On-site workshops

Dedicated Ninox workshops are currently being planned. We will keep you up to date.



# Ninox Cloud

- Teamwork multi-platform and -browser
- Mobile use via apps
- GDPR-compliant
- Real-time synchronisation
- Data centres are ISO/IEC 27001:2005 certified
- SSL/TLS encryption with 2048 bit
- 10 GB per user

# Private Cloud (Hosted) with and without SSO

- All points of the Ninox Cloud
- Hosting on a dedicated server
- Selectable server location
- Optional own sub-domain
- 250 GB storage space, expandable for a fee
- Encrypted backups
- Separate user administration



# Private Cloud (On-premise) with and without SSO

- All points of the Ninox Cloud
- Hosting in your company's network
- Selectable server location
- Encrypted backups
- Separate user management



# > *Which of your ideas do we implement first?*

The Ninox team looks forward to your ideas and challenges.

ninox PARTNER FOR MECHANICAL ENGINEERING COMPANIES

A decorative orange line starts from the top right, curves down and left, then curves down and right, ending at the bottom right. It intersects with a large orange circle on the right side. On the left side, there is a partial orange circle. At the bottom, there are three orange semi-circles of different sizes.

ninox